

<b>MATRIX</b>	Parts Replacement: CBC Console Back Cover
Prepared by: Chris DeBlois	Date Prepared: 8/6/18
Time Required: 10 Minutes	Models Affected: Matrix IC7

### TOOLS REQUIRED

- Phillips screwdriver
- Replacement cover ZMS4007113

### PROCEDURE

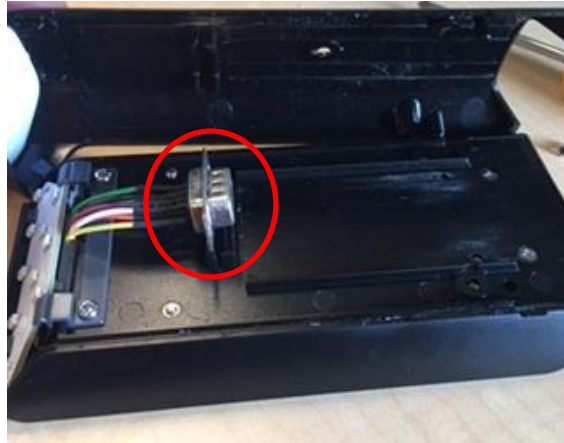
1. Remove the console from the unit.



2. Remove the two screws from the back cover.



3. Push the display port into its proper position.



4. Put the back cover into the display port slot, but do not push the cover down.



5. Grip the device as shown below. Slide the back cover forward until it snaps into place.



6. Reinstall the two screws in the back cover, and then reattach the console to the unit.